

NETZSCH

Proven Excellence.



MultiProtector: The Monitoring and Protection Unit

An app displays the critical data of your pump, warns, and protects it from damage

Pumps & Systems

MultiProtector

Pump protection device for NETZSCH pumps

The MultiProtector is a monitoring and protection unit developed for NETZSCH positive displacement pumps. With this device, you can detect possible pump difficulties at an early stage. Based on, preset threshold values, you can protect the pump from damage in advance.

The MultiProtector analyzes the data on overpressure, temperature, leakage (conductivity measurement) and voltage. In the "MultiProtector" app, you can define two threshold values. One threshold value causes an alarm, the second one triggers a warning, which can also be used to switch off the pump. In addition, the error history is documented, and a live diagnostic can be performed. You can analyze the condition of the pump based on individual reports and optimise it. The pump is thus protected from damage.

What can be monitored?

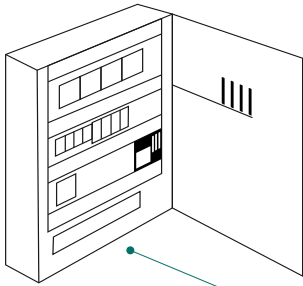
- Temperature of the motor, stator, and pumped medium
- Pressure at the discharge port of the pump, signal input 0-20 mA (4-24 mA)
- 2 ways to measure leakage (conductivity measurement)
- Motor frequency
- Motor voltage

With the "MultiProtector" app, handling is very easy

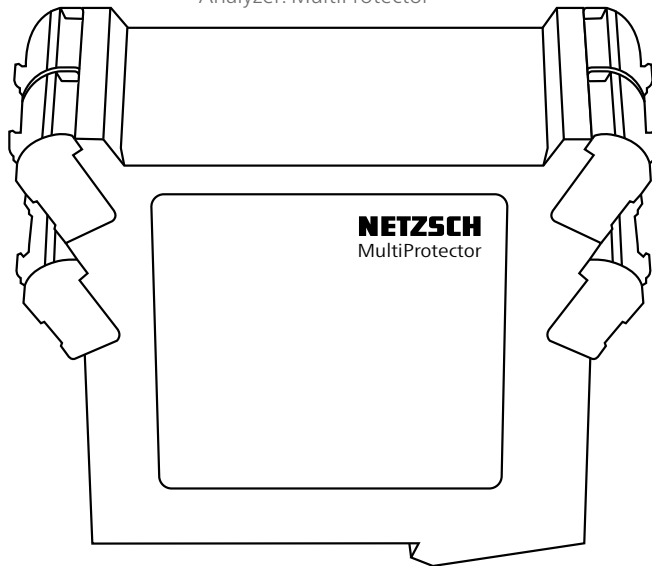
The MultiProtector pump protection unit can be connected to mobile devices such as smartphones, tablets or laptops. With the app, you can set the threshold values on the device, display the pump's sensor data in real-time and generate reports.



Installed in a control cabinet



Analyzer: MultiProtector



Real-time diagnosis



2 threshold values
can be defined per
sensor. These can lead
to a warning signal or
switch off the pump.

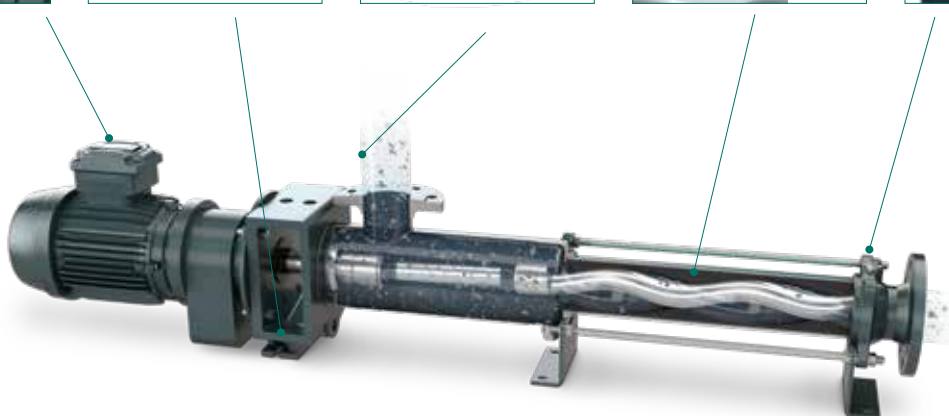
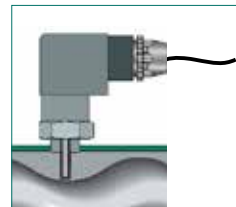
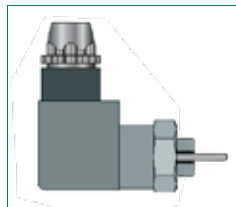
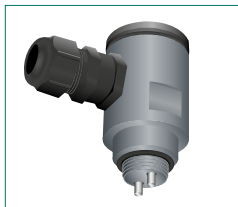
Sensor for motor
voltage and
temperature

Sensor for leakage
detection

Sensor for monitoring
the media temperature

Temperature sensor for
dry-running protection

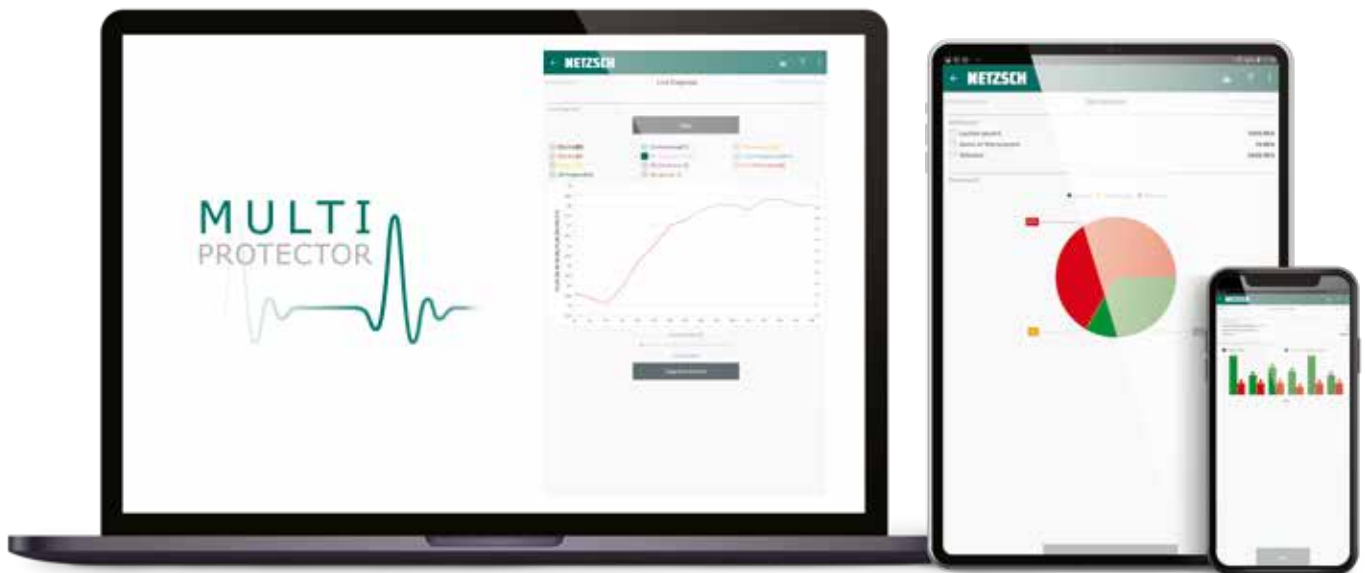
Sensor for measuring
the discharge pressure
of the pump



Anytime and anywhere

Retrieve data and avoid downtime

With one click in the app, you can create a PDF report with error history, statistics and set parameters. You can use this for documentation or also for troubleshooting.



NETZSCH Pumps USA
119 Pickering Way
EXTON, PA 19341-1393
Tel.: 610 363-8010
Fax: 610 363-0971
npa@netzsch.com

NETZSCH Pumps USA
1511 FM 1960 Road
Houston, TX 77073
Tel.: 346 445-2400
npa@netzsch.com

NETZSCH Canada, Incorporated
500 Welham Road
Barrie, ON L4N 8Z7
Tel.: 705 797-8426
Fax: 705 797-8427
ntc@netzsch.com



Partner of the Engineering Industry
Sustainability Initiative

NETZSCH®

pumps-systems.netzsch.com